



KEY TAKEAWAYS

- HISTORY &
- CULTURE •

WHY HISTORIC & CULTURAL RESOURCES MATTER

Historic and cultural resources are arguably among the most crucial aspects of any healthy community and an important quality of life factor. Chicopee’s historic and cultural resources are an integral part of its character. Preserving the City’s many historic buildings, landscapes, places, and objects and opening them to the public enhances connections among residents, allowing them to recognize they have a collective past. Cultural resources can also be connected to the City’s history, as well as the social and environmental aspects of living in Chicopee today. These include the arts, educational institutions, and community traditions and events. All these resources provide a sense of place in Chicopee and make it a unique and interesting place to be.

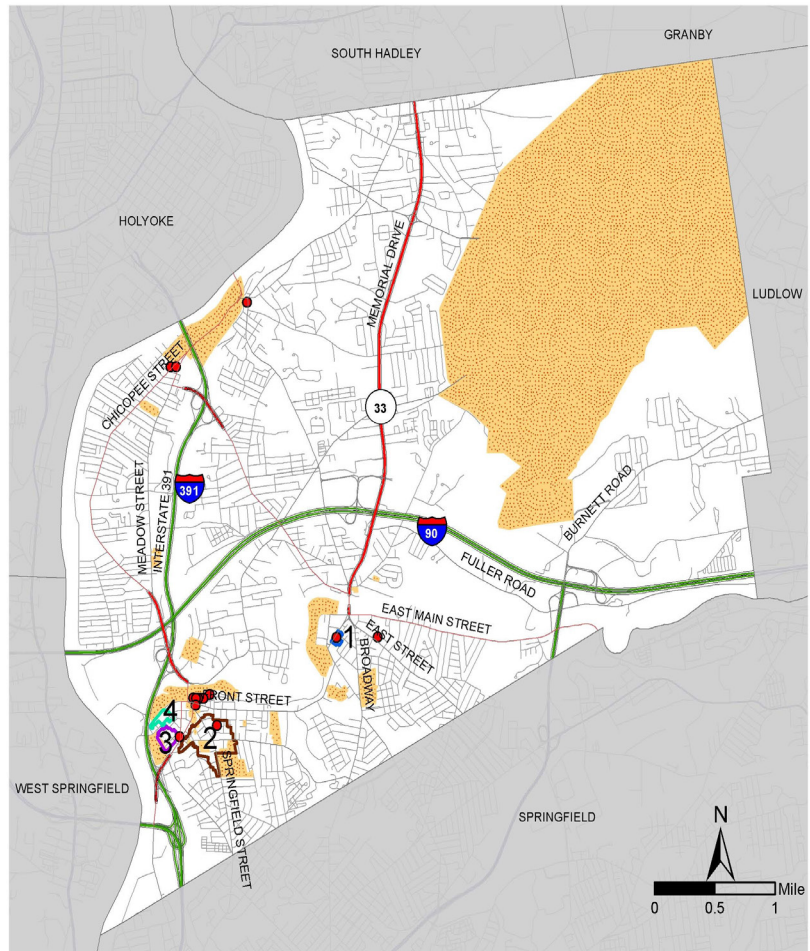
HISTORIC RESOURCES

There are four historic districts in the City of Chicopee.

- Church Street Historic District (State Register)
- Dwight Manufacturing Company Housing District (State and Federal Register)
- Springfield Street Historic District (State and Federal Register)
- Cabotville Common Historic District (State and Federal Register)

Nine structures are designated on the National Register of Historic Places:

- Al’s Diner
- Ames Manufacturing Company
- Carreau Block
- Chapin School
- Chicopee City Hall
- Thomas C. Page House
- Edward Bellamy House
- Valentine School
- Polish National Home



Legend

- Historic Area
- National Register of Historic Places

Historic Districts

- 1 Church Street
- 2 Springfield Street
- 3 Cabotville Common
- 4 Dwight Manufacturing Company Housing



Edward Bellamy House

The City has a municipal Historical Commission who oversee preservation, protection, and development of the historical and archeological assets of the City. The Commission makes recommendations to the City Council (which then makes recommendations to the Massachusetts Historical Commission) about certifying historical and archeological landmarks.

While each of the four historic districts should have a Historic District Commission, none of them are currently active. This makes it much more difficult to maintain the resources in these districts and to advocate for their protection.

CULTURAL & ARTS RESOURCES

The Chicopee Cultural Council’s mission is to advance excellence and access to the arts, humanities, and interpretive sciences. Through grants to artists, arts organizations, independent council projects, volunteerism, and community input, the Council aims to support local artists and enhance meaningful cultural experiences for the entire community.

The Edward Bellamy Memorial Association (EBMA) is a non-profit volunteer-based organization that was founded in 1972 to promote the literary legacy of 19th-century Utopian novelist Edward Bellamy. The Association is looking to revitalize the Edward Bellamy House to better engage the community by expanding exhibits and programs and connecting with other regional house museums.

The Chicopee Historical Society is a volunteer-based organization that was founded in the late 1980s to promote Chicopee’s history. Looking ahead, the Chicopee Historical Society hopes to develop a museum for the City, be recognized as a separate entity from the EBMA and the Chicopee Public Library and build strong collaborations within the City. There are very limited resources available for these organizations, and these community assets are at risk in the long term if the City does not find ways for them to be better supported financially.

